

# SCN60

## Parts Reference Guide

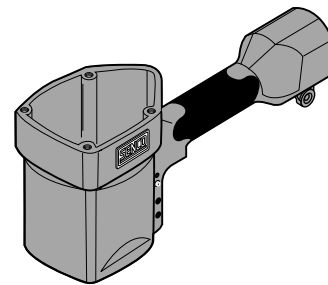
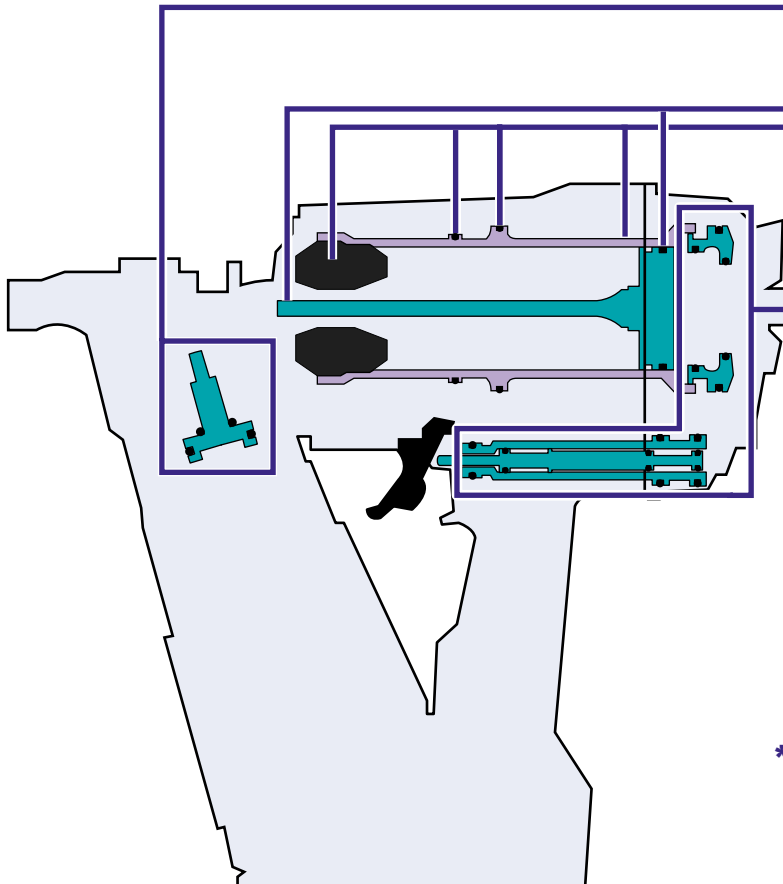


Senco Products, Inc.  
8485 Broadwell Road  
Cincinnati, Ohio 45244  
Visit our Website [www.senco.com](http://www.senco.com)

Questions? Comments? call SENCO's toll-free Action-line:  
1-800-543-4596 or e-mail: [toolprof@senco.com](mailto:toolprof@senco.com)

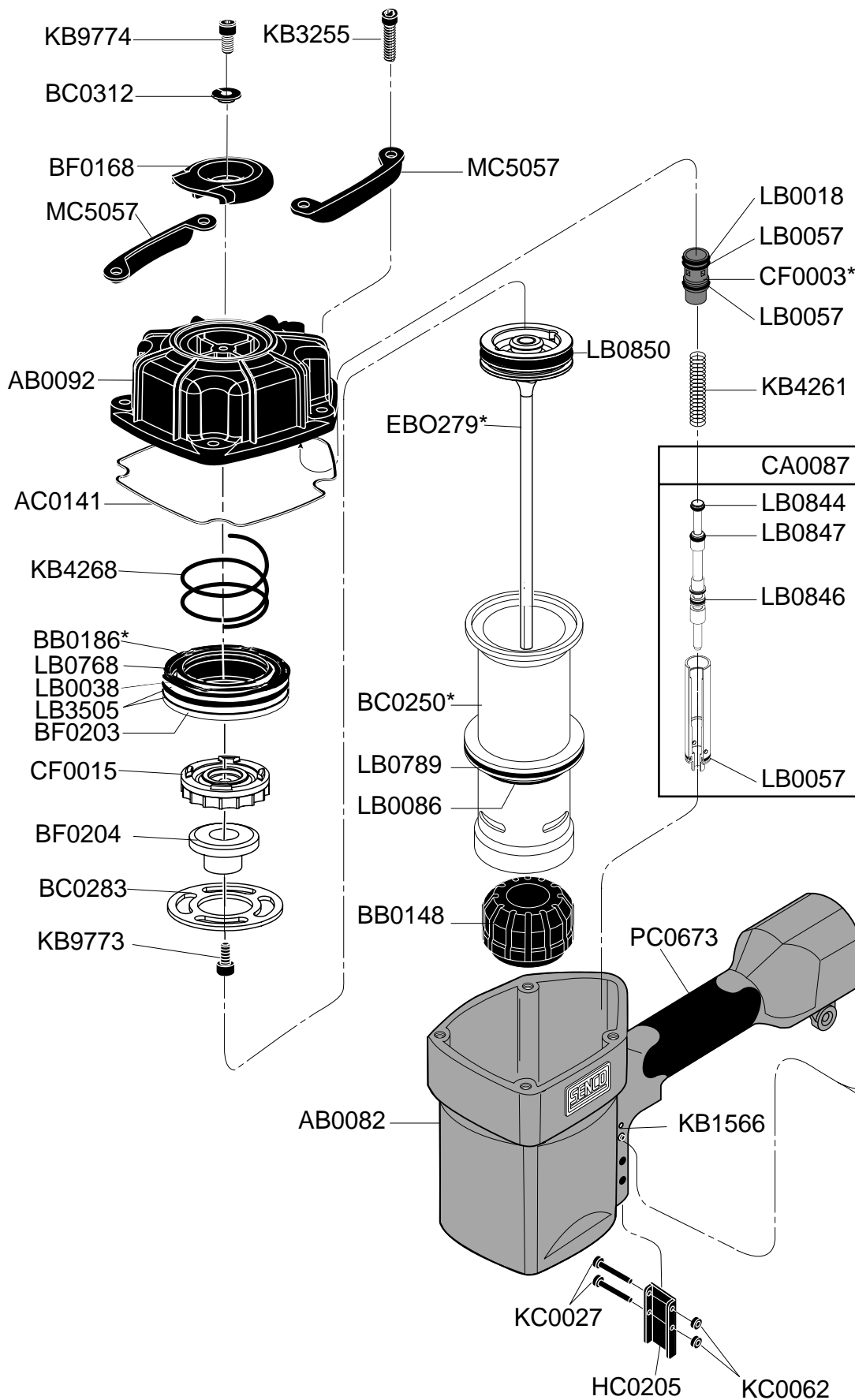
### Parts Kits

|   |        |
|---|--------|
| D | YK0227 |
| C | YK0301 |
| B | YK0224 |
| A | YK0299 |



\* Schematic Drawings inside

|   | Symptom   | Síntoma   | Symptome  | Symptôme   |   |
|---|---|---|---|--|---|
| A | Air Leak (Top)<br>Tool does nothing<br>Sluggish | Escape de Air (Arriba)<br>Herramienta no mueve<br>Operación Floja | Undichtigkeit oben am Gerät<br>Gerät reagiert nicht                         | Fuite à l'échappement<br>Ne fonctionne plus<br>Appareil lent | A |
| B | Air Leak (Bottom)<br>Poor Return                | Escape de Air (Abajo)<br>Retorno Flojo                            | Undichtigkeit unten<br>am Gerät keine oder nur<br>unzureichende Rückführung | Fuite à la base du<br>moteur Remontée<br>du conteau lente    | B |
| C | Weak Drive<br>Broken Driver                     | Penetrado Flojo<br>Lanzeta Quebrada                               | Gerät treibt nicht ein<br>Gebrochener Treiber                               | Peu de puissance<br>Mauvaise percussion                      | C |
| D | Poor Feed<br>Tool Jamming                       | Alimentador podre<br>Entrancado de la<br>Herramienta              | Befestiger werden<br>nicht nachgeschoben<br>Gerät ist verklemt              | Enraiments<br>Mauvaise avance des<br>projectiles             | D |



| Model  |             |
|--------|-------------|
| 520001 | Dual Action |
| 520002 | Restrictive |

- \* Does Not Include O-rings
- \* No incluye sellos de gomas
- \* Ohne Dichtringe
- \* Joints exclus

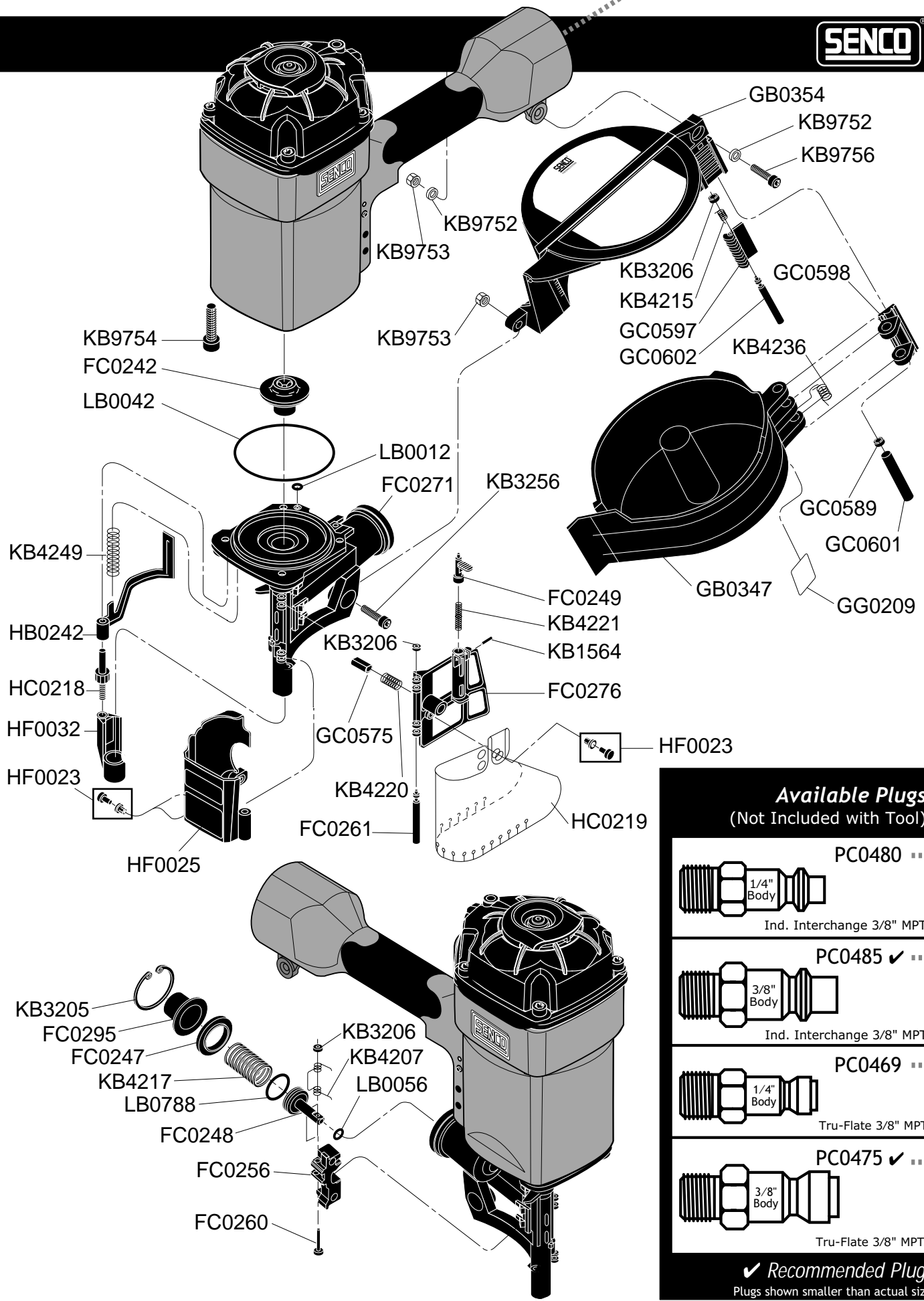
**Available Triggers**

KC0062    HC0148  
 HC0211  
 KB1555  
 KC0027

**Dual-Action HA0093**

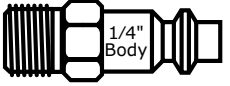
KC0062    HC0149  
 KB4131  
 HC0211  
 KB1555  
 KB4130  
 KC0027

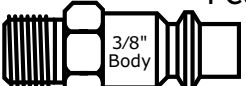
**Restrictive HA0098**

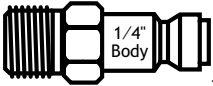



NFC052 Revised July 27, 2000 (Replaces 6/9/00) ©1995, 2000 by SENCO Products, Inc. Cincinnati, Ohio 45244-U.S.A.

**Available Plugs**  
(Not Included with Tool)

- 

PC0480  
1/4" Body  
Ind. Interchange 3/8" MPT
- 

PC0485 ✓  
3/8" Body  
Ind. Interchange 3/8" MPT
- 

PC0469  
1/4" Body  
Tru-Flate 3/8" MPT
- 

PC0475 ✓  
3/8" Body  
Tru-Flate 3/8" MPT

✓ **Recommended Plugs**  
Plugs shown smaller than actual size

| PART NO. | DESCRIPTION         | DESCRIPCIÓN        | BESCHREIBUNG           | DÉSIGNATION             |
|----------|---------------------|--------------------|------------------------|-------------------------|
| AB0082   | MAINBODY            | CUERPO PRINCIPAL   | GEHÄUSE                | CORPS                   |
| AB0092   | CAP                 | TAPA               | KAPPE                  | BOUCHON                 |
| AC0141   | SEAL                | SELLO              | DICHTUNG               | JOINT                   |
| BB0148   | STOP                | TOPE               | PUFFER                 | AMORTISSEUR             |
| BC0250   | CYLINDER            | CILINDRO           | ZYLINDER               | CYLINDRE                |
| BB0186   | FIRING VALVE PISTON | PISTON             | KOLBEN                 | PISTON                  |
| BC0283   | RETAINER            | JUNTA TÓRICA       | SICHERUNGSRING         | RETENUE                 |
| BC0312   | BUSHING             | CASQUILLO          | HÜLSE                  | DOUILLE                 |
| BF0168   | DEFLECTOR           | DESVIADOR          | ABWEISER               | DÉFLECTEUR              |
| BF0204   | RETAINER            | JUNTA TÓRICA       | SICHERUNGSRING         | RETENUE                 |
| CA0087   | CORE ASSEMBLY       | ASAMBLE DE VÁLVULA | VÁLVULA-ZUSAMMENBAU    | ENSEMBLE VALVE          |
| CF0003   | HOUSING             | ALOJAMIENTO        | GEHÄUSE                | CORPS                   |
| CF0015   | VALVE               | VÁLVULA            | VENTIL                 | VALVE                   |
| EB0279   | PISTON ASSEMBLY     | ASAMBLE DE PISTON  | KOLBEN-ZUSAMMENBAU     | ENSEMBLE PISTON-COUTEAU |
| FC0242   | GUIDE               | GUIA               | FÜHRUNG                | GUIDE                   |
| FC0247   | STOP                | TOPE               | PUFFER                 | ARRÊT                   |
| FC0248   | PISTON              | PISTON             | KOLBEN                 | PISTON                  |
| FC0249   | LATCH               | UÑETA              | VERSCHLUSS             | DOIGT DE RETENUE        |
| FC0256   | FEED PAWL           | ALIMENTADOR        | VORSCHIEBER            | POUSSOIR                |
| FC0260   | PIN                 | PASADOR            | STIFT                  | GOUPILLE                |
| FC0261   | PIN                 | PASADOR            | STIFT                  | GOUPILLE                |
| FC0271   | GUIDEBODY           | PLACA DE NARIZ     | NAGELFÜHRUNG           | FRONT                   |
| FC0276   | DOOR                | PUERTA             | ABDECKSCHIEBER         | PORTE                   |
| FC0295   | CAP                 | TAPA               | KAPPE                  | BOUCHON                 |
| GB0347   | MAGAZINE            | CARGADOR           | MAGAZIN                | MAGASIN                 |
| GB0354   | MAGAZINE            | CARGADOR           | MAGAZIN                | MAGASIN                 |
| GC0575   | RETAINER            | JUNTA TÓRICA       | SICHERUNGSRING         | RETENUE                 |
| GC0589   | RETAINER            | JUNTA TÓRICA       | SICHERUNGSRING         | RETENUE                 |
| GC0597   | LOCK                | CERRADURA          | SICHERUNG              | BLOCAGE                 |
| GC0598   | HINGE               | GOZNE              | SCHARNIER              | CHARNIÈRE               |
| GC0601   | PIN                 | PASADOR            | STIFT                  | GOUPILLE                |
| GC0602   | PIN                 | PASADOR            | STIFT                  | GOUPILLE                |
| GG0209   | LABEL               | ETIQUETA           | AUFKLEBER              | ÉTIQUETTE               |
| HA0093   | TRIGGER             | GATILLO            | AUSLÖSER               | GACHETTE                |
| HA0098   | TRIGGER             | GATILLO            | AUSLÖSER               | GACHETTE                |
| HB0242   | SAFETY ELEMENT      | SEGURO             | SICHERHEITSVORRICHTUNG | PALPEUR DE SÉCURITÉ     |
| HC0148   | TRIGGER             | GATILLO            | AUSLÖSER               | GACHETTE                |
| HC0149   | TRIGGER             | GATILLO            | AUSLÖSER               | GACHETTE                |
| HC0205   | GUIDE               | GUIA               | FÜHRUNG                | GUIDE                   |
| HC0211   | TRIGGER             | GATILLO            | AUSLÖSER               | GACHETTE                |
| HC0218   | WHEEL               | MANIVELA           | RÄNDELSCHRAUBE         | MOLETTE                 |
| HC0219   | DUST COVER          | CUBIERTA           | ABDECKUNG              | COUVERCLE               |
| HF0023   | HOOK                | SOPORTE            | TRÄGER                 | SUPPORT                 |
| HF0025   | COVER               | CUBIERTA           | ABDECKUNG              | PORTE                   |
| HF0032   | SAFETY ELEMENT      | SEGURO             | SICHERHEITSVORRICHTUNG | PALPEUR DE SÉCURITÉ     |
| KB1555   | PIN                 | PASADOR            | STIFT                  | GOUPILLE                |
| KB1564   | PIN                 | PASADOR            | STIFT                  | GOUPILLE                |
| KB1566   | PIN                 | PASADOR            | STIFT                  | GOUPILLE                |
| KB3205   | RING                | ANILLO             | REIFEN                 | ANNEAU                  |
| KB3206   | RETAINER            | JUNTA TÓRICA       | SICHERUNGSRING         | RETENUE                 |
| KB3255   | SCREW               | TORNILLO           | SCHRAUBE               | VIS                     |
| KB3256   | SCREW               | TORNILLO           | SCHRAUBE               | VIS                     |
| KB4130   | SPRING              | RESORTE            | FEDER                  | RESSORT                 |
| KB4131   | SPRING              | RESORTE            | FEDER                  | RESSORT                 |
| KB4207   | SPRING              | RESORTE            | FEDER                  | RESSORT                 |
| KB4215   | SPRING              | RESORTE            | FEDER                  | RESSORT                 |
| KB4217   | SPRING              | RESORTE            | FEDER                  | RESSORT                 |
| KB4220   | SPRING              | RESORTE            | FEDER                  | RESSORT                 |
| KB4221   | SPRING              | RESORTE            | FEDER                  | RESSORT                 |
| KB4236   | SPRING              | RESORTE            | FEDER                  | RESSORT                 |
| KB4249   | SPRING              | RESORTE            | FEDER                  | RESSORT                 |
| KB4261   | SPRING              | RESORTE            | FEDER                  | RESSORT                 |
| KB4268   | SPRING              | RESORTE            | FEDER                  | RESSORT                 |
| KB9752   | WASHER              | RONDANA            | SCHIBE                 | RONDELLE                |
| KB9753   | NUT                 | TUERCA             | MUTTER                 | ÉCROU                   |
| KB9754   | SCREW               | TORNILLO           | SCHRAUBE               | VIS                     |
| KB9756   | SCREW               | TORNILLO           | SCHRAUBE               | VIS                     |
| KB9773   | SCREW               | TORNILLO           | SCHRAUBE               | VIS                     |
| KB9774   | SCREW               | TORNILLO           | SCHRAUBE               | VIS                     |
| KC0027   | PIN                 | PASADOR            | STIFT                  | GOUPILLE                |
| KC0062   | RETAINER            | JUNTA TÓRICA       | SICHERUNGSRING         | RETENUE                 |
| LB0012   | SEAL                | SELLO              | DICHTUNG               | JOINT                   |
| LB0013   | SEAL                | SELLO              | DICHTUNG               | JOINT                   |
| LB0015   | SEAL                | SELLO              | DICHTUNG               | JOINT                   |
| LB0018   | SEAL                | SELLO              | DICHTUNG               | JOINT                   |
| LB0038   | SEAL                | SELLO              | DICHTUNG               | JOINT                   |
| LB0042   | SEAL                | SELLO              | DICHTUNG               | JOINT                   |
| LB0056   | SEAL                | SELLO              | DICHTUNG               | JOINT                   |
| LB0057   | SEAL                | SELLO              | DICHTUNG               | JOINT                   |
| LB0086   | SEAL                | SELLO              | DICHTUNG               | JOINT                   |
| LB0131   | SEAL                | SELLO              | DICHTUNG               | JOINT                   |
| LB0137   | SEAL                | SELLO              | DICHTUNG               | JOINT                   |
| LB0768   | SEAL                | SELLO              | DICHTUNG               | JOINT                   |
| LB0788   | SEAL                | SELLO              | DICHTUNG               | JOINT                   |
| LB0789   | SEAL                | SELLO              | DICHTUNG               | JOINT                   |
| LB0849   | WASHER              | RONDANA            | SCHIBE                 | RONDELLE                |
| LB3505   | SEAL                | SELLO              | DICHTUNG               | JOINT                   |
| MC5057   | SHIELD              | PLACA              | SCHUTZPLATTE           | BOUCLIER ANTIABRASIF    |
| PC0673   | GRIP                | AGARRADERO         | GRIFF                  | GAINE DE CUIR           |